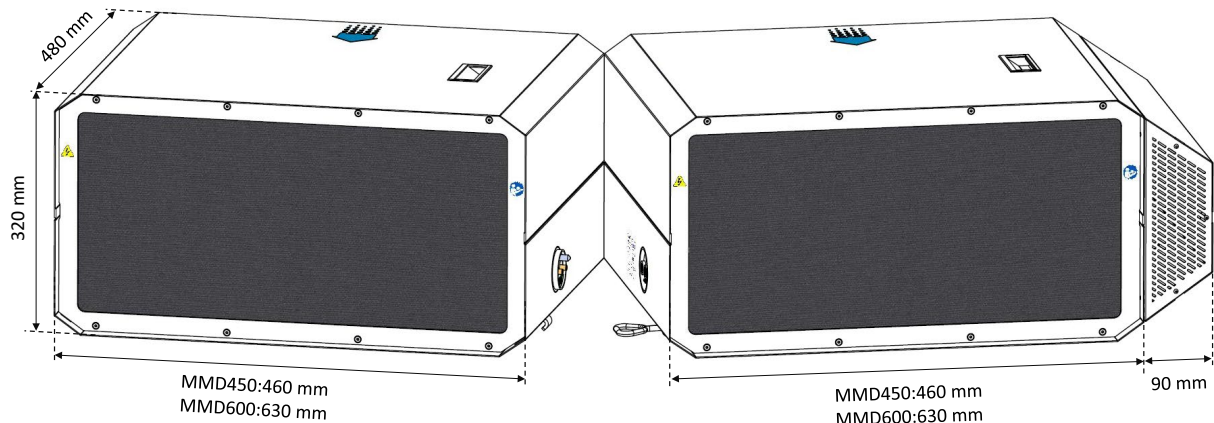




## Technical Specifications: **MMD 600**

PRODUCT		MODEL MMD450	MODEL MMD600
Treatment Capacity		850 m <sup>3</sup> /hr 230 l/s	1100 m <sup>3</sup> /hr 320 l/s
Rated face velocity		1.8 m/s	
Filtration Rating		HEPA (99.95%)	
Pressure Drop		120 Pa	
User Interface		Mobile Phone App (Android /iOS) Low-level BMS connectivity	
System Configuration		HVAC integrated (Return, Supply, Standalone)	
Dimensions	Master	550 (W) x 320 (H) x 480 (L) mm	720 (W) x 320 (H) x 480 (L) mm
	Slave	460 (W) x 320 (H) x 480 (L) mm	630 (W) x 320 (H) x 480 (L) mm

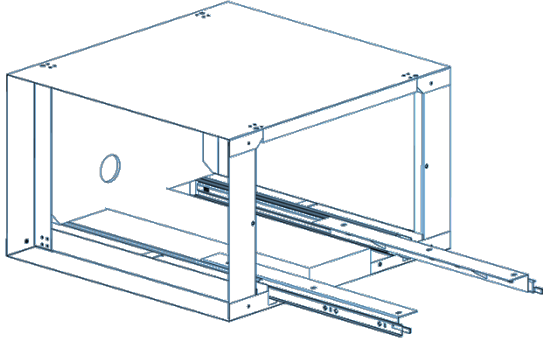


Slave unit

Master unit

System Weight	25 kg (Master unit) 20 kg (expandable Slave unit)	35 kg (Master unit) 30 kg (expandable Slave unit)
Voltage and Frequency	100-240 VAC 50/60 Hz	
Power Consumption	80 VA (nominal) 250 VA (max)	100 VA (nominal) 250 VA (max)
Operating conditions	-10 °C to +40 °C 10% to 85% relative humidity non-condensing	
Noise Level	< 5 dB (HVAC integrated configuration)	

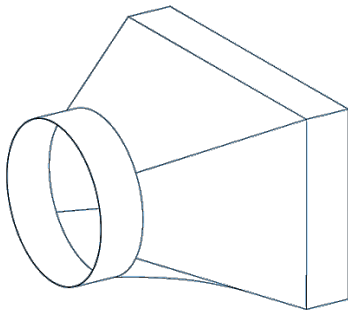
# Installation Accessories



## HVAC Integration Sleeve

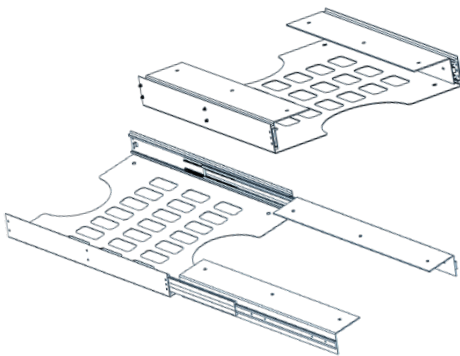
Part Number: 9600474 (single unit)

Part Number: 9600475 (stacked configuration)



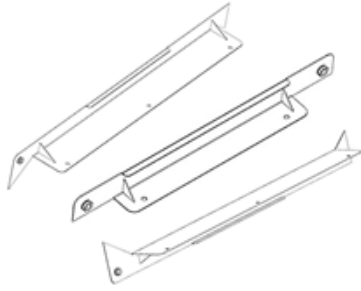
## Transition Interface (Sleeve inlet/outlet to 315 mm round duct)

Part Number: 2600520

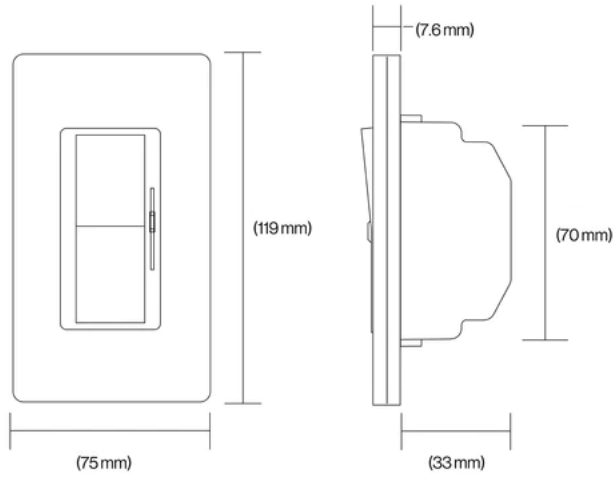


## Slide Compartment

Part Number: 9600414



**Interface – Flange**  
Part Number: 9600449



**Wired Controller**  
Part Number: 9250337